

PROTIK
CABLE MANAGEMENT SOLUTION

ADVANCED CABLE MANAGEMENT SOLUTIONS FOR
ENTERPRISES AND INDUSTRIES



ABOUT **PROTIK**

EFFECTIVE CABLE MANAGEMENT SOLUTIONS

- FOR COST REDUCTION
- PREDICTABLE PLANNING
- PERFORMANCE IMPROVEMENT
- RISK REDUCTION



HOW CAN PROTIK HELP YOU

- We use advanced design softwares including CAD for better precision and flexibility for designing and planning.
- Helps you reduce overall maintenance efforts with 0 wastage of materials during installation.
- Our designs and innovative accessories are focused to make expansion operations quick and seamless.



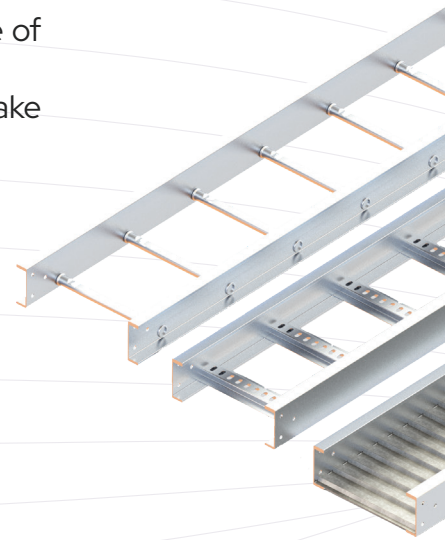
HOW DOES PROTIK FUNCTION?

- Once we shake hands on project confirmation, our team of expert engineers will visit the installation site.
- Our team will be present from scratch to post installation to ensure precise installation according to the site needs.
- Our post sales team will be a mail or a call away to assist you for any queries.



INTERNATIONALLY ACCREDITED ENGINEERS

- Dedicated project engineers
- Precise estimates for faster application
- Precise industry machinery for error free installation



A smart way for any enterprise to effectively manage data and power transmission



- Zubair Masadi, Chief Operations, URS Corporation



Standardize Cable Management



Protect Sensitive Cables To Last Forever



Eliminate Exposed Cables For Safety Of All The Workforce

MISSION

We specialize in Cable Management Systems and provide a broad selection of standard products and customized solutions to meet any project needs and site requirements.

VISION

Our company strives to be the innovators in cable management solutions, providing our customers with integrated, simple, and efficient solutions to their cabling needs.

SERVING ALL SECTORS IN THE ECONOMY

Protik's cable management solutions can be utilised by oil and gas industries, power and water, chemical industries, data centres, marine, building construction, solar energy, workspaces and offices.

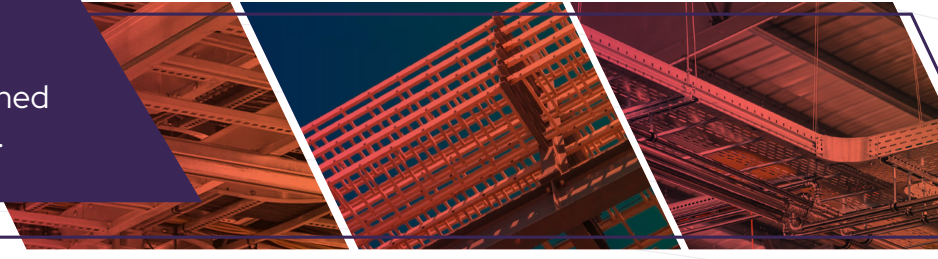
HASSLE FREE INSTALLATION BY EXPERTS

Industrial machinery for precise application and installation.
EIM technology for 0 wastage of materials.



INDUSTRIES WE SERVE

Our cable management systems are designed to meet the unique needs of each industry.



Oil and gas industries



Power and water



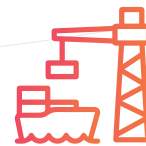
Data centre



Building Construction



Chemical Industries



Marine



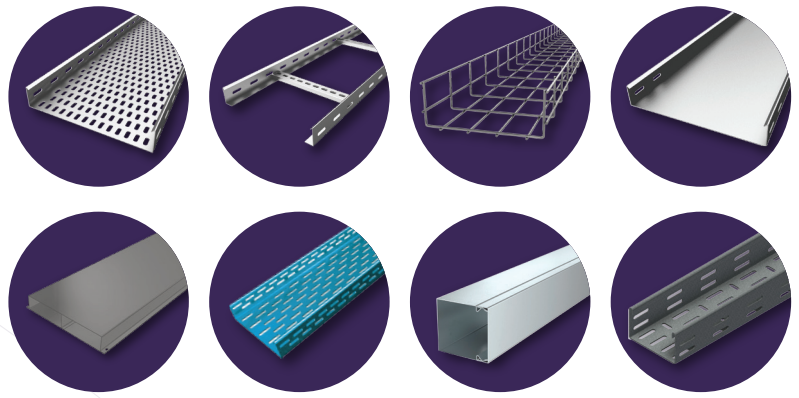
Solar energy



Workspaces and offices

OUR PRODUCTS

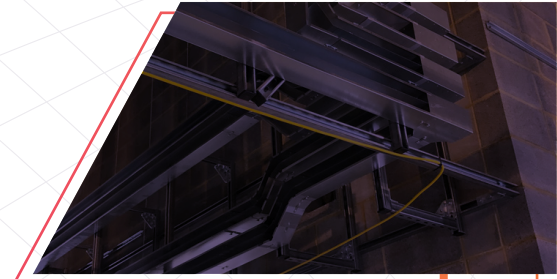
See PROTİK's Product ranges and their Specifications



MULTI CABLING SYSTEMS SUPPORT FROM PROTİK

Protik is a leading cable management systems company that provides high-quality multi-cabling systems support. Our range of products includes solid bottom type cable tray, channel cable tray, and cable trunkings and even include cable conduit systems such as metallic and PVC conduits .

The company is committed to providing customers with the best possible solutions for their cable management needs.

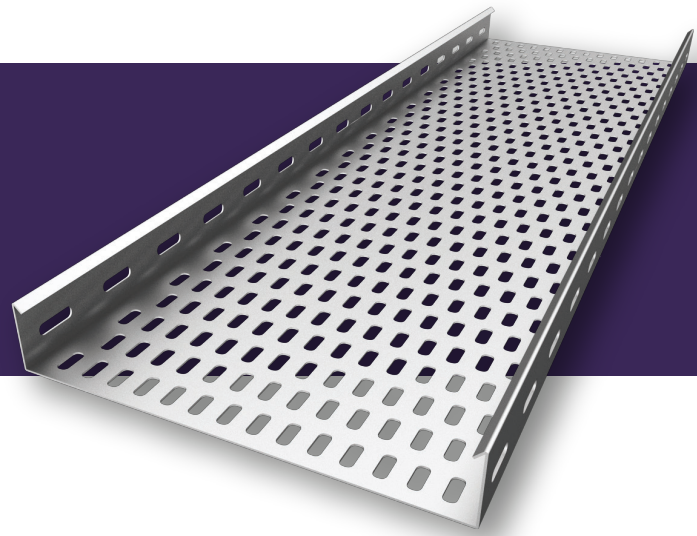


Did you know that sufficient air flow for cables increases network strength and needs less maintenance?

Network functionality depends a lot on proper air flow. It increases energy efficiency, keeping temperatures low to stabilize cable hardware performance.

If the cabling system gets too hot (without proper cable management/exposed cables), it can get significantly hot, making termination points to expanding, causing interruptions in the network signal.

01. PERFORATED CABLE TRAY

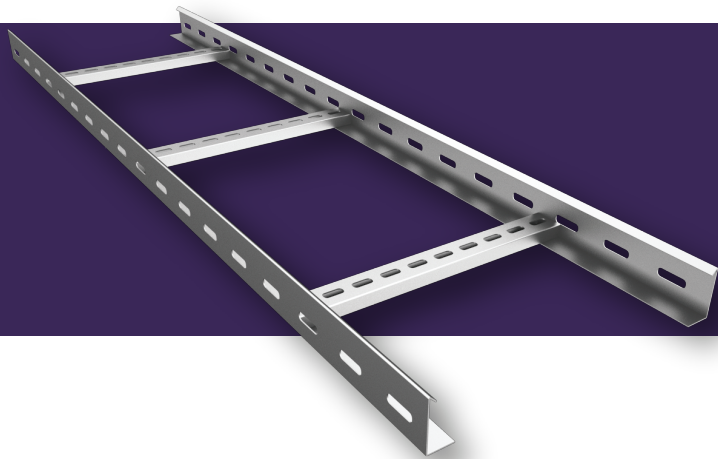


Organize cables in the most efficient ways with sufficient airflow in all kinds of building structures.

Perforated Type Cable Tray are used to distribute cable and has been designed carefully keeping in mind industrial requirements. These trays are manufactured using top quality material and are available in various sizes. We can offer customized solution for all the products.

Perforated Cable Trays can be bent, turned, and designed as per the building layout. They carry the cables with enough air circulation and prevent drooping which again results in superior performance and reduced repairs and maintenance costs.

PROTIK
CABLE MANAGEMENT SOLUTION



02. LADDER TYPE

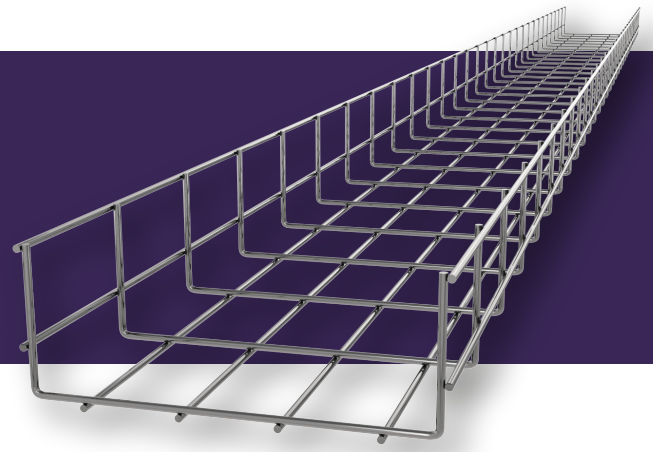
Ladder is most suitable for more heavy-duty applications.

LADDER TYPE CABLE TRAYS or cable ladders are the most commonly used type of cable trays. It has two side rails connected by rungs and provides solid rail protection and system strength.

This type of cable containment is effective because the ladder rungs give effortless accessibility to the cables, both from the top and the bottom. Ladder type cable trays are most suited for more heavy-duty applications and when we need to create a complicated, multi-directional network of cables.

They are durable and run on minimal maintenance over a long period of time.

03. WIRE BASKET CABLE TRAY



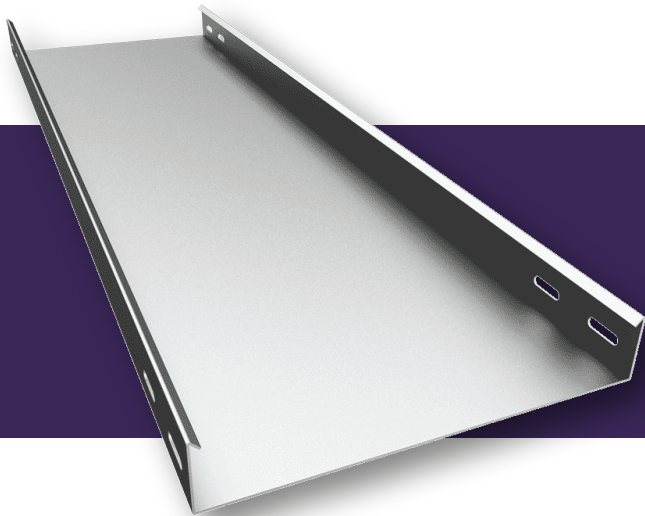
Wire basket cable trays is designed to provide superior strength and heavy load bearing capacity.

If you are looking for a safe, durable and a setup that requires to handle a heavy payload, Protik's wire basket cable trays are the choice for any organization

Protik offers solutions with quick fixing systems which save time during installation:

- **AUTOCLIC** : Fast coupling solution without nuts and bolts
- **FASCLIC** : Pre-coupled cable tray

Installing wiremesh solutions is also made easier by the complete range of support systems: wall brackets, suspension brackets, hangers, Strut rails, etc.

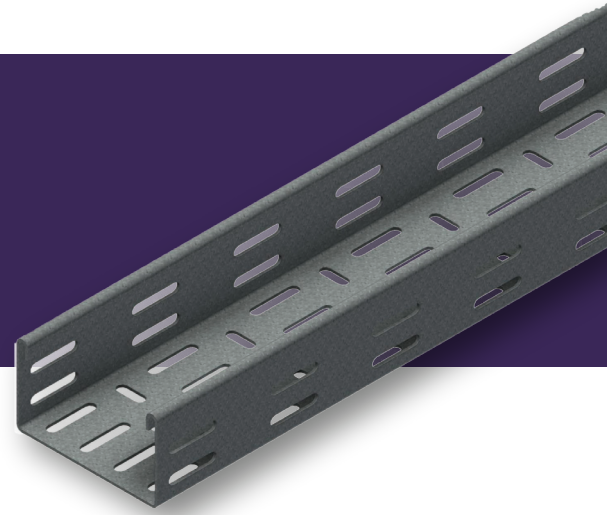


04. SOLID BOTTOM TYPE

Provides non-ventilated continuous support for delicate cables.

SOLID BOTTOM CABLE TRAYS are the most effective cable management solution to carry delicate cables in a non-ventilated, closed circuit. It is generally used for carrying minimal heat-generating electrical or telecommunication applications with short to intermediate support spans. Some engineers and designers specify solid bottom cable trays, usually along with covers in the belief that all electrical circuits have to be totally enclosed by metal for protection.

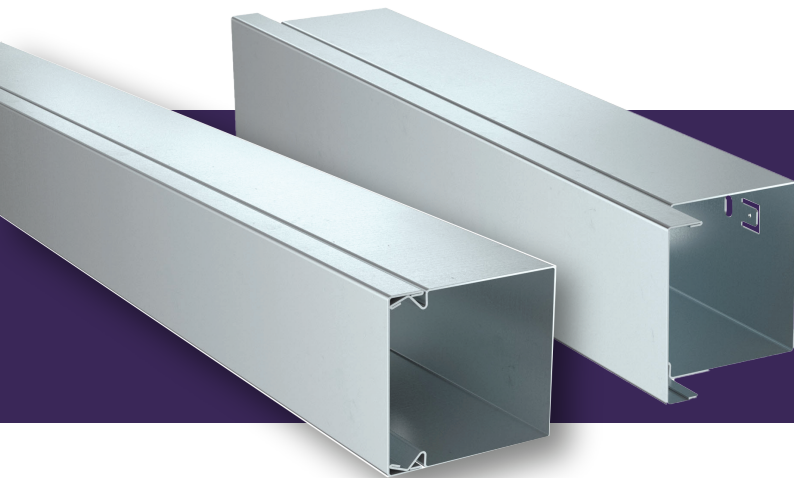
05. CHANNEL TRAY



Used for installations with limited numbers of tray cable.

CHANNEL TYPE CABLE TRAYS work best in situations that don't provide the best conduit and only need short to medium span of length up to 10 feet. These trays can fit conveniently on the ground under a desk, but they only offer limited flexibility when it comes to the direction of the cables and can't support the weight of numerous cables.

PROTIK
CABLE MANAGEMENT SOLUTION



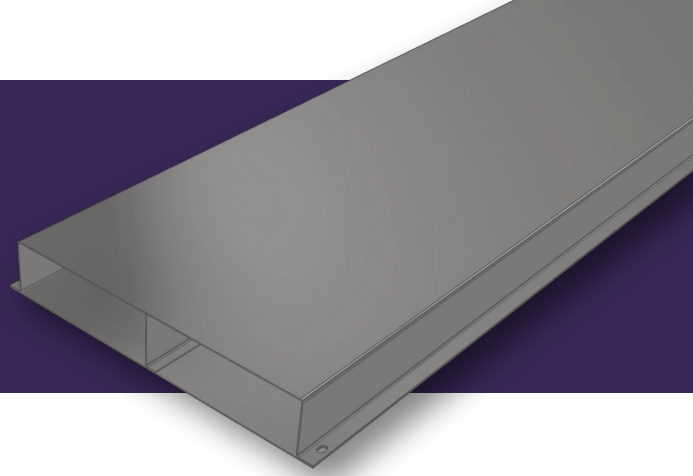
06. CABLE TRUNKINGS

Used to protect cables and provide space for other electrical equipment.

Cable trunkings refers to the rectangular/square enclosure made of steel or plastic that is used to protect cables and provide space for other electrical equipment. It usually has a removable or hinged side. Trunkings are mainly used so that the cables stay organized and hidden from view adding to the aesthetics of the place. It is the safe and professional way to protect the electrical wires post installation.

Cable trunkings come in mild steel, GI aluminum and stainless steel. They are later fortified using PVC coating, special paints, powder coat, or galvanized for better strength and durability.

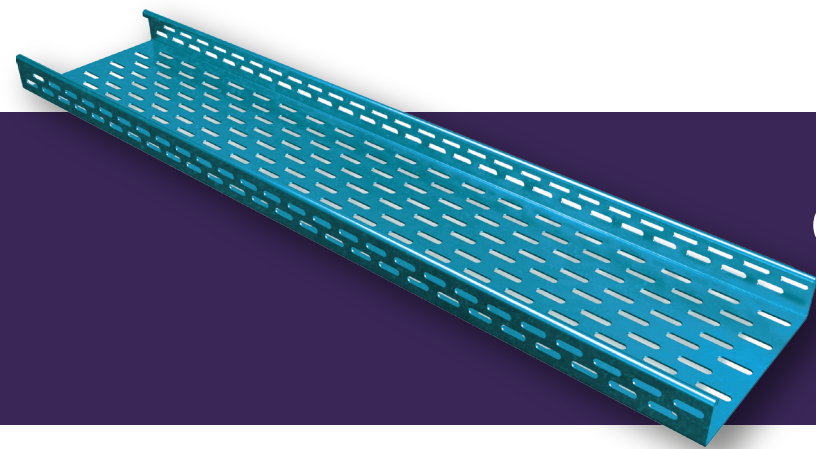
07. UNDERFLOOR TRUNKINGS



Used to lay out underground cables and wires.

TRUNKING is commonly used to lay underground cables and wires, and where power needs to be carried between multiple devices and terminals. Underground trunking protects cables from dust and water ingress due to its concealed, secure nature.

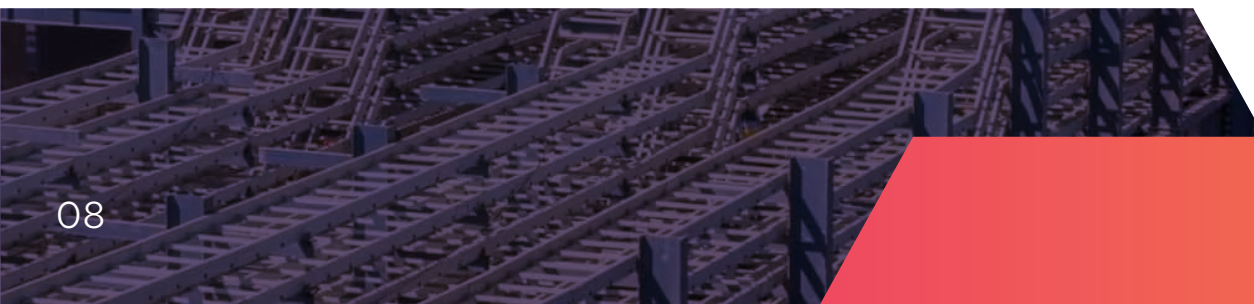
A trunking network is a must have for offices as it can allow multiple employees to connect to the same entity. Trunking greatly improves the efficiency of the network and an underground trunking system does so without causing any visible hurdles or interruptions.



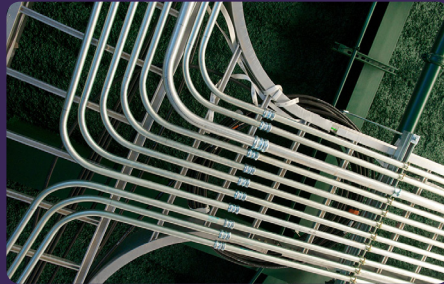
08. FIBERGLASS CABLE TRAY

For minimal heat-generating electrical or telecommunication applications

FIBERGLASS CABLE TRAY gives you the load capacity of steel. They are non-conductive, non-magnetic, and corrosion-resistant. These characteristics reduce shock hazard and make our FRP cable tray transparent to radio waves, radar and microwaves. FRP cable trays are made of corrosion resistant fiber reinforced plastic, and is used extensively in electrical and instrumentation installations.



MULTI FORM FACTORS FOR COMMERCIAL & INDUSTRIAL USAGE



METALLIC CONDUIT SYSTEMS

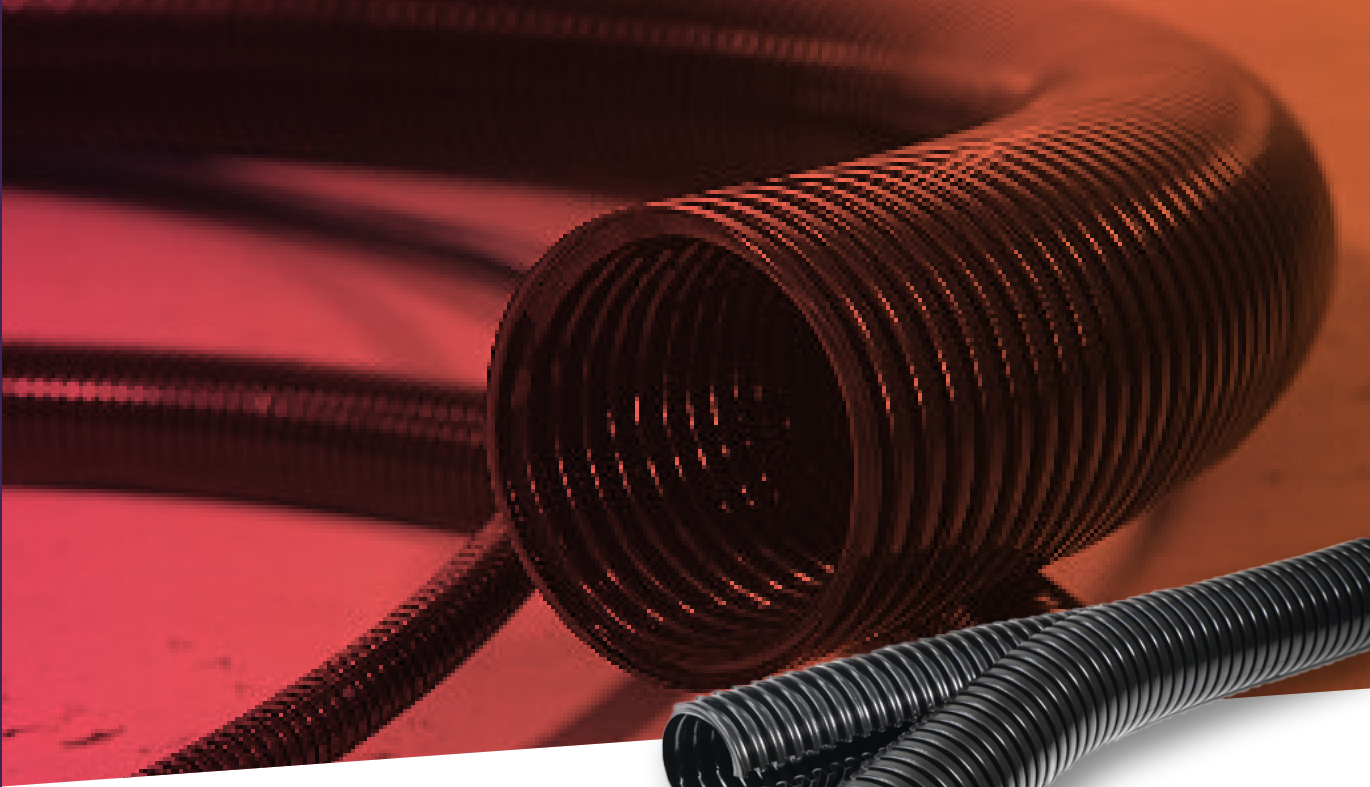


Metal conduits are generally defined as cable protection conduits and fittings made of metal. Standard metal conduit, protective conduit solutions made of metal impress with high impact and temperature resistance. In addition, many metallic electrical conduits are also resistant to liquids such as oil, gasoline or chemicals. Other tubing offers electromagnetic protection.



FEATURES & BENEFITS

- Protects against impact at all temperatures
- Deflects nails and screws, and doesn't stretch or tear
- Demonstrates durability and the highest yield / tensile strengths
- Offers exceptional fire resistance
- Intermediate metal conduit
- Rigid metal conduits
- Galvanized rigid conduit
- Flexible metal conduit
- Liquid tight flexible metal conduit
- Electrical metal tubing

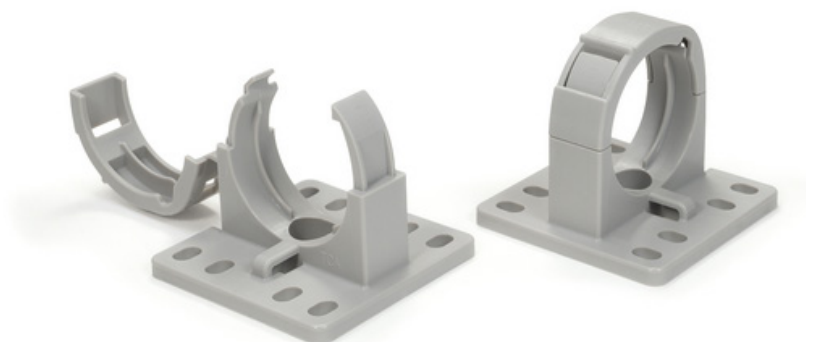


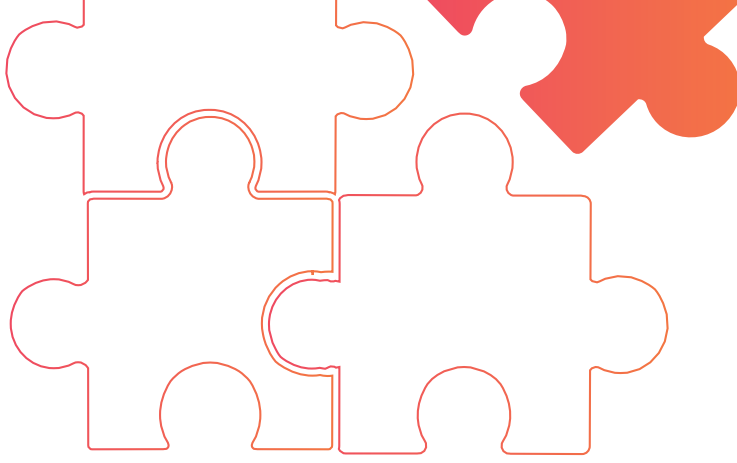
PVC CONDUIT

Polyvinyl chloride (PVC) is a combination of plastic and vinyl that is used to make PVC pipes. These popular types of pipes are commonly used in plumbing as an alternative to more expensive copper piping. PVC is also used to produce electrical conduit. It is also used where it will be in contact with water, such as below ground or encased in concrete. PVC conduit will not rust or corrode when exposed to water.

FEATURES & BENEFITS

- Resistance to fire and high temperatures
- Longevity
- Easy to assemble
- Smooth interior
- Shock proof
- Easy to cut and join





SAVE COSTS FOR THE FUTURE

and smoothen current operational workflow with **Protik**.

Over 5K error free installations across the globe.

BIM TECHNOLOGY FOR CABLE MANAGEMENT SYSTEMS

STRUCTURAL ANALYSIS

INSTALLATION SERVICES

HOW DO WE WORK



Contact us through phone, mail, WhatsApp or in-person at our experience centers in the middle east.



Our expert engineers will understand your requirement, provide multiple options for applications from which you can choose, based on your requirement and costing



Once approved, our team of installation engineers will take over the site, overseen by our senior engineers, who will be accompanied by the company staff at all times



Our senior engineers will then train the specific staff from the corporation to undertake maintenance or expansion works.

Protik's engineers will be present in the stage of initial consultation, planning, designing and pretty much from the very beginning to the end of the installation to ensure safety, accuracy and imply quality checks.

WHY TO CHOOSE PROTİK



• DESIGN

Expert Design & Analysis



• COST EFFECTIVE

Reduce Operational Costs



• AVAILABILITY

Available All Over The Globe



• INSTALLATION SUPPORT

Steadfast & Error Free Installation



• ONE STOP SOLUTION

Long Term Benefits,
One Time Cost



• PROFESSIONALIZED MANAGEMENT

Led by expert industrialists



BAHRAIN

Promag Technical Services W.L.L
Shop 207, Road 41, Block 939
Al Hajiyat, Riffa -
Kingdom of Bahrain

+973 3403 2617

QATAR

Promag Engineering W.L.L
Office 10, Building 210,
Street 330, Nuaija 43
Doha - Qatar

+974 5026 4827

UAE

Promag Technical Services
Warehouse 06, Plot 0599-0940
Jabel Ali Industrial Area 1, Dubai
- UAE

+971 50 40 30 537

OMAN

Post box 1029
Pc 133
Alkhuwair
Sultanate of oman

+971 55 249 1687

Reach us at : sales@protikcms.com

WWW.PROTIKCMS.COM

